

Rabibochées

Company Breaked & l'Algue rousse

Technical rider (version from March 2024)



Concept and performance : **Suzon Gheur*** & **Jeanne Decuypere***

Light design and stage management : **Adèle Evans***

Sound design : **Olivier Thomas**

Costumes and support to the scenography : **Marie Kersten**

Outside helping gaze : **Valérie Joyeux**

Graphic design : **Mélusine Gheur**

Video : **Alex Allison**

Accomplices : **Pierre Viatour & Jeanne Delhause**

Diffusion : **Céline Meurice, Nouveau Monde Diffusion**

*3 people on tour

A show dedicated to young audiences, from 3 years old onwards.

TOUR TEAM'S INFORMATION

Suzon Gheur, project carrier : suzongheur@gmail.com +32 479 62 59 41

Jeanne Decuypere, project carrier : jeannedecuyyp@gmail.com +32 489 14 53 76

Adèle Evans, technical management : adele.evans@insas.be +33 648 08 05 27

GENERAL

This technical rider is a part of the contract. Some adjustments may be required if necessary, depending on the venue's particularities with the approval of the company's technical manager and the project carriers. In order to best plan our coming to your venue, we would like you to send us:

- the venue's technical data sheet with your plans in .JPG, .PNG or PDF. It is necessary this includes sectional drawings, plant design of the grid and the stage as well of the seating plan.
- an exhaustive list of the equipment.
- the contact details of your technical manager (email address and phone number).
- the venue's full address.

Please plan an easy access to the unloading dock and a parking spot close to the venue.

Thank you for your collaboration. As soon as we receive your technical data sheet and the venue's drawings, we will send you a drawing adapted to the venue.

Duration of the show: 40mins.

Capacity: 130 young audience or 150 all audiences.

Ideal dimensions of the stage:

7mtrs by 7mtrs (min.6mmtrs), with a 0% slope

Height under the grid: 4 to 7mtrs high

Black box with German tabs or plain walls

Floor: black dancefloor

Frontal stage configuration, ideally with bleachers

Team from the venue: if the get in is on the day before the show, 1 person / if the get in is on the day of the show, 2 people, with competences in sound, light and stage management.

GET IN & GET OUT

Set and preset: if possible, we would like you to preset-up the stage, the cables and the lights according to the lighting plan sent beforehand by the crew's technical manager, especially on a day 0 get in.

Scenography brought by the crew:

16 varied-sized bobbins and 2 ropes.

Get in:

provided the preset shift is already done, 1 shift to set up the scenography, for the sound-check and to focus the lights (2 to 4hrs).

- If the first show of the day is set before 1pm, the get in must take place the day before;
- If the first show of the day is set from 1pm onwards, the get in can be done on the day of our arrival.

Get out: 1h for 2 people (crew's technical manager + 1-2 technicians from the venue).

HOSTING

Dressing room:

Please plan a comfortable dressing room with:

- a bathroom, a shower and a WI-FI access.
- a small catering including gluten-free options, fruits (such as apples and bananas), dried fruits and nuts, hot beverages (coffee and tea) and mineral water.

As an ecology concern, we would like you to select, if possible:

- a water fountain or an easy access to drinkable running water
- bulk items of food in order to avoid plastic waste
- recycle bins according to your location's recycle plan

In the event of several days of shows or full days of work, please plan 2 gluten-free meals for 3 people.

LIGHT FIXTURES

- 17 PC or fresnel 1KW with barndoors and gel frames
- 6 PAR 64 CP62 with gel frames
- 1 PC 2KW with barndoors and gel frames
- 1 profile 1 KW 28°<54°
- 1 F1 or PAR 36
- 1 dimmable blue light on a floor plate for the court-side
- dimmable house lights (if you don't have any already set up, please provide 2 horizontodes with 202 Lee gels)
- at least 24 2KW dimmable channels
- a table for the technical manager's lighting equipment behind the audience with a blue light
- Lee gels (6x 053, 4x 202, 4x 501 or 201, 1x 213, 1x 136 & 1x 161)

The crew will bring a computer with D:Light and an Enttec device.

We only use 1 DMX universe, thank you for providing a DMX splitter if the venue uses more than one universe.

	L501	L202	L053	L136	L213	L161
PC 1KW	4	4	4	.	.	.
PAR 64 CP62	.	.	1	1	1	.
Découpe 1KW	.	.	1	.	.	.
PC 2KW	1

SOUND

Please set up a stereo sound system adapted to the venue + SUB and two sound playback monitors backstage.

The technical manager will also need a mix table with a blue light set up behind the audience.

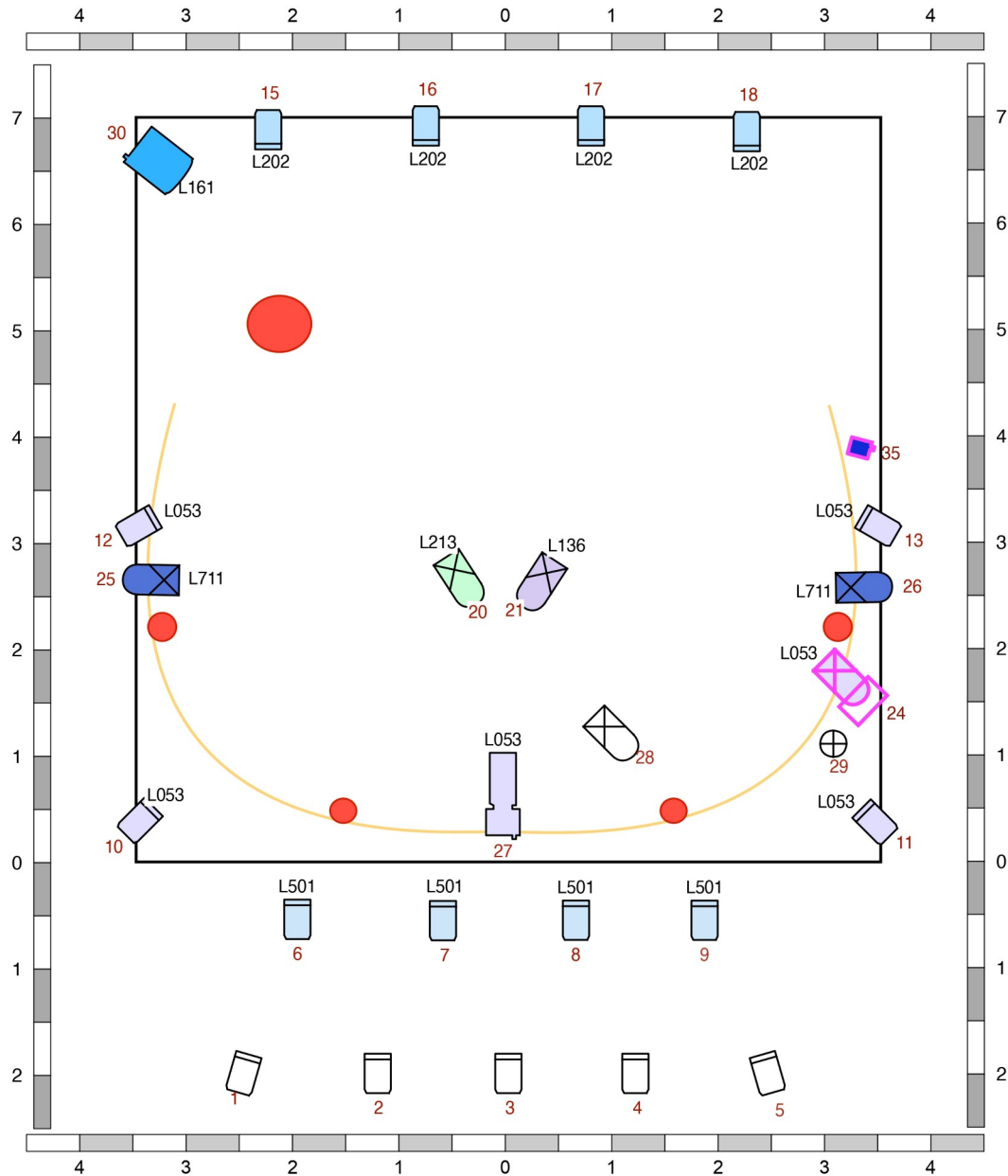
The crew will bring a computer with QLab and a soundcard.

Both sound and lights will be operated by the same person, please plan a table with a good visibility of the stage, ideally in the same room as the audience.

Rabibochées

v. 07.03.2024

cies Breaked & l'Algue rousse



LEGENDE :

← 1m →



PC 1KW x 17



Stage 7x7m



PC 2KW x 1



Rope (floor scenography)



PAR 64 CP62 x 6



Bobins (floor scenography)



Profile 28°<54° x 1



Blue light



F1/ PAR 36 x 1



Fixtures on floor plates

CONTACT

Adèle Evans : +33648080527

adele.evans@insas.be