

Rabibochées

Company Breaked & l'Algue rousse

Projected technical rider (version from November 2023)

Concept and performance : Suzon Gheur & Jeanne Decuypere

Outside helping gaze : Valérie Joyeux

Costumes and support to the scenography : Marie Kersten

Sound design : Olivier Thomas

Light design and stage management : Adèle Evans

Diffusion : Céline Meurice

A show dedicated to young audiences, from 3 years old onwards.

TOUR TEAM'S INFORMATION

Suzon Gheur, project carrier : suzongheur@gmail.com +32 479 62 59 41

Jeanne Decuypere, project carrier : jeannedecuyp@gmail.com +32 489 14 53 76

Adèle Evans, technical management : adele.evans@insas.be +33 648 08 05 27

GENERAL

This technical rider is a part of the contract. Some adjustments may be required if necessary, depending on the venue's particularities with the approval of the company's technical manager and the project carriers. In order to best plan our coming to your venue, we would like you to send us:

- the venue's technical data sheet with your plans in .JPG, .PNG or PDF. It is necessary this includes sectional drawings, plant design of the grid and the stage as well of the seating plan.
- an exhaustive list of the equipment.
- the contact details of your technical manager (email address and phone number).
- the venue's full address.

Please plan an easy access to the unloading dock and a parking spot close to the venue.

Thank you for your collaboration. As soon as we receive your technical data sheet and the venue's drawings, we will send you a drawing adapted to the venue.

Duration of the show: 40mins.

Capacity: 150 people.

Ideal dimensions of the stage: 7m by 7m, with a 0% slope
Height under the grid: 5 to 7m
Black box with German tabs or plain walls
Floor: black dancefloor

Team from the venue: 2 to 3 people, with competences in sound, light and stage management.

Set and preset: if possible, we would like you to preset-up the stage, the cables and the lights according to the lighting plan sent beforehand by the crew's technical manager.

Get in: provided the preset shift is already done, 1 shift to set up the scenography, for the sound-check and to focus the lights.

Get out: 1h for 2-3 people (crew's technical manager + 1-2 technicians from the venue).

Dressing room: Please plan a comfortable dressing room with:

- a bathroom, a shower and a WI-FI access.
- a small catering including gluten-free options, fruits (such as apples and bananas), dried fruits and nuts, hot beverages (coffee and tea) and mineral water.

As an ecology concern, we would like you to select, if possible:

- a water fountain or an easy access to drinkable running water
- bulk items of food in order to avoid plastic waste
- recycle bins according to your location's recycle plan

Scenography brought by the crew:

16 varied-sized bobbins (..... to) and 2 ropes

LIGHT FIXTURES

(The light design is still in progress, the list and the drawing below are subject to changes. The final lighting plan, as well as an adaptation to your venue will be provided to you as soon as possible.)

- 15 PC or fresnel 1KW with barndoors and gel frames
- 4 PAR 64 CP62 with gel frames
- dimmable house lights (if you don't have any already set up, please provide 2 horiziodes with 202 Lee gels)
- 24 2KW dimmable channels
- a table for the technical manager's lighting equipment behind the audience with a blue light
- Lee gels (183, 711, 202) & Rosco gels(119 & 228)

The crew will bring a computer with D:Light and an Enttec device.

We only use 1 DMX universe, thank you for providing a DMX splitter if the venue uses more than one universe.

SOUND

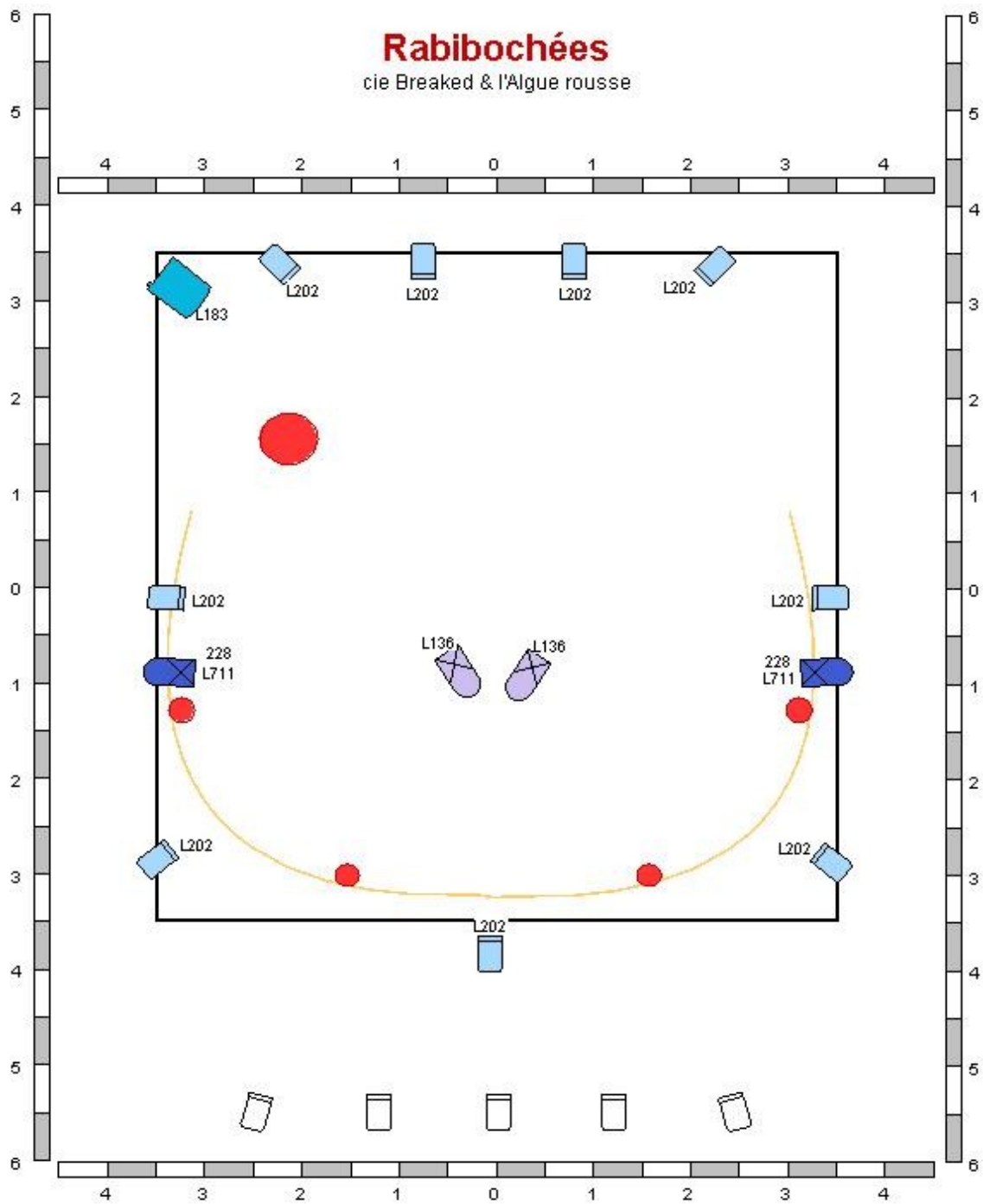
Please set up a stereo sound system adapted to the venue + SUB and two sound playback monitors backstage.

The technical manager will also need a mix table with a blue light set up behind the audience.

The crew will bring a computer with QLab and a soundcard.


Rabibochées


cie Breaked & l'Algue rousse




LEGENDE :


— 1.0m —


 Plateau ou espace de jeu 7mx7m

 Guinde (scéno au sol)

 Bobines (scéno au sol)

 PC 1KW x 15

 PC 2KW x 1

 PAR 64 CP62 x 4

CONTACT

Adèle Evans : +33648080527

adele.evans@insas.be