



Technical Rider

TEARAWAY

Update: 25/04/22



TABLES OF CONTENTS

SHOW	page 2
GENERAL	page 2
SPECIFIC	page 3
HOSTING	page 5
CONTACTS	page 5
MACHINERY PLAN	page 6
LIGHTING PLOT	page 7

SHOW

GENERAL

Stage configuration: front-end audience

Title: "TearAway"

Length of the show: 50 min

Company's team: 1 artiste on stage, 2 technicians (stage, light+sound)

Public: all audience (school audience from 10 yrs)

Max gauge: 400 people

Language : EN version
FR version
(agreement beforehand)

Stage requirements: the scenography is flexible, therefore, if the space is too small, we can potentially make adjustments (more time in the space will then be necessary).

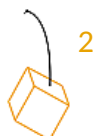
Optimal

- opening: 8m
- length : 10m
- depth: 8m
- height: 6m 50

(below bars)

Minimal

- opening: 7m
- length : 9m
- depth: 7m
- height: 5m



SPECIFIC

Get in & Set up:

- We demand to the organizer to provide a technician familiar with the venue, to answer to any technical questions/needs. (Days D-1 and D).
- All the rigging equipment is provided by the company. We just need a structure (bars, truss, ...)

PRE-GET IN

All bars/truss emptied with just the lights on, pre-set at hips level.
In case of a fixed structure, provide an easy access to it.

Day D-1

ARRIVAL OF THE TEAM

Unloading: 30 min
Machinery set up: 3h30 (*timing still under development*)
Light focus and sound check: 3h

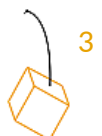
Day D

Technical finishing : 2h
Run : 2h
Performance : 50 min
Disassembly : 3h

(timing's for information purposes only, variable depending on location)

Equipment provided by the space/organizer:

- 1 stable table (for the "console" of the stage technique, offstage left wing).
- Working weights (for a total of 60 kg).
- 2 or 4 Italian curtains (will be mounted after the machinery to avoid any conflict of passage).
- 1x1m bar+ 2 rings (will be fixed above the "console", offstage left wing).



Implantation & machinery: (see plan below)

- 2 rigging point with a SWL of 500 kg are required- on the central bar. Points 'fixed - stabilized' point so there is no tow on the system when the performer applies their weight.

- 1 floor anchor point with a SWL of 500 kg is required offstage left wing (± central).

This could be an anchor plate secured to the deck, rated eyebolts secured to masonry, existing steel structure (i.e. counterweight cage), suitably ballasted point, 1T water tank, ...

- 1 wall anchor point (offstage left wing, ± central): an element needs to be paged offstage.

- 16 rigging point with a SWL of 10kg. 8 scenic flown elements require an onstage header pulley point and an offstage divert pulley point offstage left wing (above the "console").

The total 'combined' weight of all scenic flown elements is 25kg

- Ideally, all the pulley points (onstage and offstage) must be attached to a rigid structure (not on drifts - unless stabilized) so there is no 'towing' of the points when weight is applied.

- offstage left wing = stage technique = « console ». The lifting/lowering of the props is operated manually from the "console". A steel tie off bar is clamped to a table in the wings and ballasted with a minimum of 50kg hand weights.

See pictures below

Sound : (see plan below)

FACADE : main stereo system with subs covering the entire audience

STAGE : 2 backs on the floor, upstage

1 surround for the voices off (right side)

Sound desk 3 IN/OUT (minimum)

The company brings a laptop (with Qlab) and a soundcard.

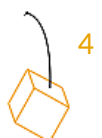
Lights: (see plan below)

1 PC 2 kW, 15x PC, 6x PF, 4x PAR, 4x dichros/sunstrip, 2x stands, 7x floor plates

26 channels

The company brings a laptop (with Dlight) and an adaptor DMX

The regies sound and light need to be at the same place (only 1 technician and laptop for both). Ideally, it should be placed in the room, facing the audience.



HOSTING

DRESSING ROOMS

Clean, heated with water and toilettes.

CATERING

4 hours before the performance, for 3 people: drinks, beverage, fruits and nuts.

MEAL

Day D-1 : prepare 2x meals for 3 people

Day D: prepare 2x meals for 3 people

We prefer to eat in the venue : **minimum 2h before** the performance.

We have 1 **vegetarian diet** (no meat, no fish) and 1 **gluten free diet**.

Are try to limit single-use plastic packaging as much as possible and use trash cans with selective sorting (when available).

PARKING

For unloading : direct access to the venue (1 vehicle).

For parking : provide space for 1 vehicle in the neighborhood for the entire duration of the contract.

THIS TECHNICAL SHEET IS AN INTEGRAL PART OF THE CONTRACT AND MUST BE RESPECTED IN ITS TOTALITY.

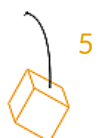
Adaptations are possible as long as they are validated beforehand by the team. Please contact us, we love to find solutions.

CONTACTS

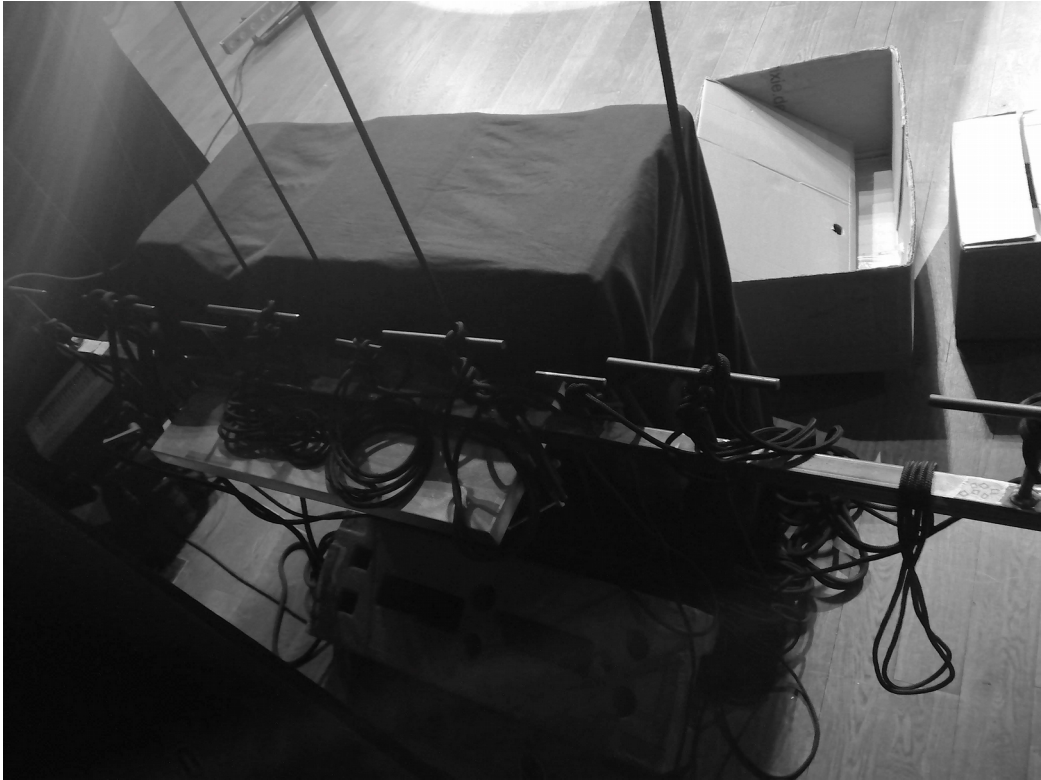
Suzon GHEUR

+32(0) 479 625 941

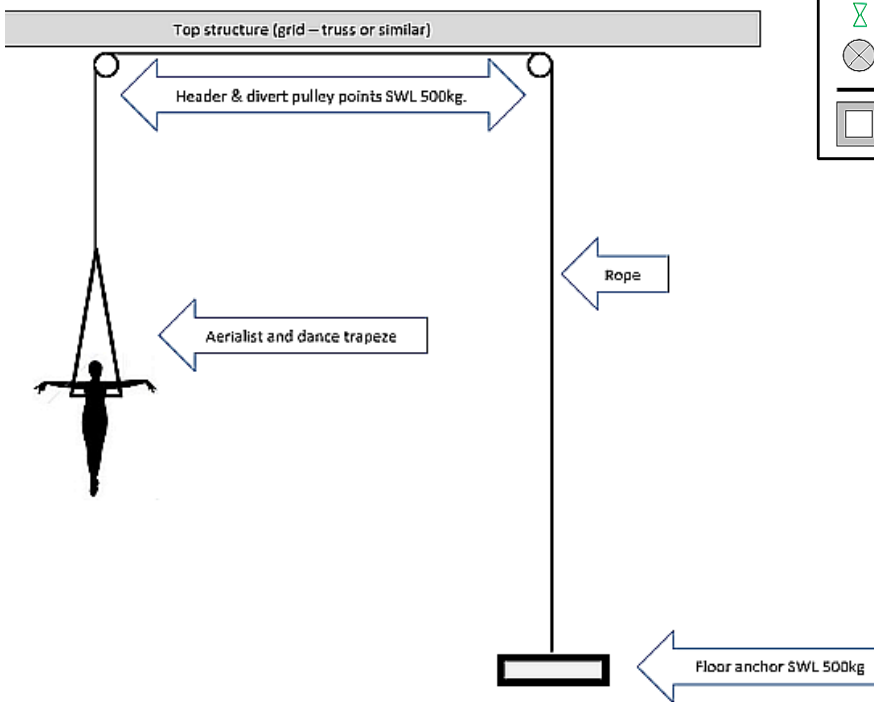
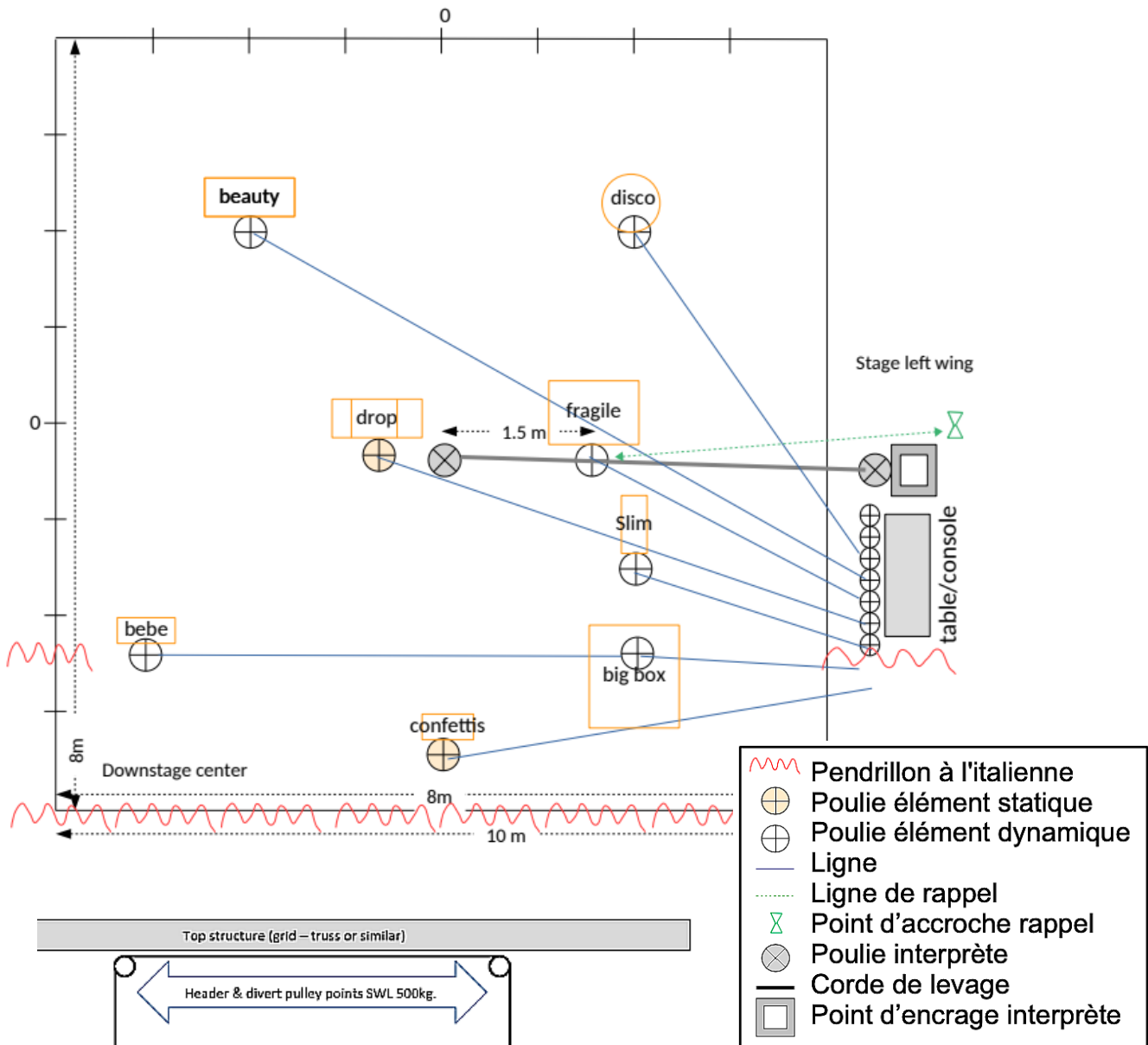
ciebreaed@gmail.com



Console



Machinery



Lighting plan

